

Project	
Notes	
Type	Date
Cat. No.	

## FL™ Series

## Mini Flood Light

### DESCRIPTION

The FL Series combines energy-efficiency, advanced optical control, and modern slim profile aesthetics to deliver enhanced performance to general outdoor lighting applications. Rugged die-cast housing provides advanced thermal management for long life and weather-proof compartment to withstand outdoor environments. Comes standard with rotatable knuckle-mount arm for versatility and convenience.

### APPLICATIONS

Excellent for general outdoor lighting applications needing low wattage LED and slim profile form factor. Common applications: multi-family common area, walkways, doorways, retail shopping centers, recreational spaces.



### FL Series

15W, 30W, 50W

### Specification Features



#### Construction

Rugged, die-cast housing with advanced thermal management system ensures reliability and durability. Weather-proof, gasketed driver compartment protects electronics against environmental elements. Small form factor and slim-profile make for versatility. IP65 Rated.

#### Optical System

Precision-formed optical lens system improves safety and security by delivering high-efficiency illumination. NEMA 7X7 beam spread

#### Certification

UL Listed. Wet Location. DLC Premium.

#### Warranty

7-year Limited Warranty. See warranty documentation for more information.

#### Electrical

Luminaire utilizes high-efficiency LED arrays maintained at cool temperatures for long life and reliability. 120V-277V input. Flicker-free. Non-dimming.

#### Installation / Mounting

Flood light comes standard with knuckle-mount arm that is rotatable. 1/2 trade size threaded chase nipple on arm mounts to electrical boxes. Available mounting accessories: yoke and trunion mount (not available for 15W).

#### Controls / Dimming

Non-dimming.

Rated Life 50,000 hours  
Limited Warranty 7-years  
Efficacy Over 110 lm/W  
Knuckle-Mount

### Ordering Information

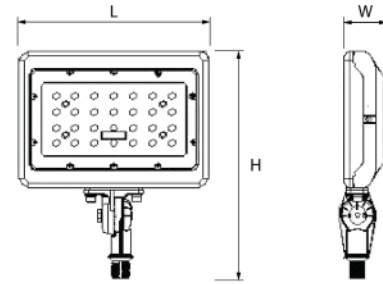
Example: FL-30/50K

FL	30	50K	[Blank]
<b>Series</b>	<b>Nominal Wattage</b>		<b>Color Temp</b>
FL	15	15W	40K 4000K
Mini Flood Light	30	30W	50K 5000K
	50	50W	
			<b>Mounting*</b>
			KNM - Knuckle-Mount
			* Other mounting options ordered separately as accessories (not installed)

Specifications and Dimensions subject to change without notice.

## Performance Summary

Input Voltage	120V-277V
Input Frequency	50/60 Hz
Rated Wattage	See Performance Table
Delivered Lumens	See Performance Table
Efficacy	> 110 LPW (typ.)
CRI	80+
Available CCT <sup>1</sup>	4000K, 5000K
Rated Life	50,000 hours
L90	50,000 hours
Power Factor	> 0.9
THD	< 15%
Dimming	Non-Dimming, Fixed Output
Beam Angle	110°
Field Angle / Beam Spread (10% luminous intensity)	150°
NEMA Type	NEMA 7X7
IP Rating	IP65
Operating Temp.	-20°C to 50°C



	L	H	W
FL-15-KNM	3.93" (100mm)	5.35" (136mm)	1.49" (38mm)
FL-30-KNM	7.12" (181mm)	9.17" (233mm)	1.92" (49mm)
FL-50-KNM	8.5" (216mm)	10.15" (258mm)	2.12" (54mm)

	L	H	W
FL-15-YOK	3.93" (100mm)	4.64" (118)	1.49" (38mm)
FL-30-YOK	7.12" (181mm)	7.44" (189mm)	1.69" (43mm)
FL-50-YOK	8.5" (216mm)	8.46" (215mm)	1.88" (48mm)

	L	H	W
FL-15-AUB	4.76" (121mm)	4.68" (119mm)	1.49" (38mm)
FL-30-AUB	7.28" (185mm)	7" (178mm)	1.69" (43mm)
FL-50-AUB	8.54" (217mm)	7.91" (201mm)	1.88" (48mm)

## Performance Data

Catalog No.	Rated Wattage (W)	Tested Wattage (W)	4000K		5000K	
			Delivered Lumens (lm)	Efficacy (lm/W)	Delivered Lumens (lm)	Efficacy (lm/W)
FL-15/xxK	14.45	14.55	1603	111.05	1624.3	112.76
FL-30/xxK	29.77	29.79	3427	115.87	3432	116.02
FL-50/xxK	49.58	49.58	5778	117.49	5793	117.8

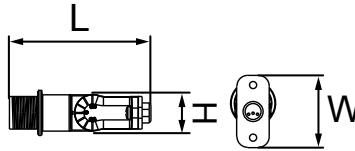
## DLC QPL Data

QPL Model No.	Product ID	Technical Req.	Classification	Primary Use
FL-15/40K	PL110Y5EQ3HI	4.4	Premium	Architectural Flood and Spot Luminaires
FL-15/50K	PLBSIP1II7EQ	4.4	Premium	Architectural Flood and Spot Luminaires
FL-30/40K	PLX39CKJ0F5K	4.4	Premium	Architectural Flood and Spot Luminaires
FL-30/50K	PLPKG054V0XU	4.4	Premium	Architectural Flood and Spot Luminaires
FL-50/40K	PLH9Y6ZDS1WR	4.4	Premium	Architectural Flood and Spot Luminaires
FL-50/50K	PLA1FG3TKU4K	4.4	Premium	Architectural Flood and Spot Luminaires



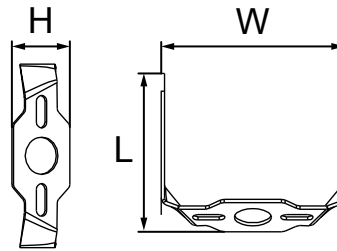
## Mounting Information

### Knuckle-Mount



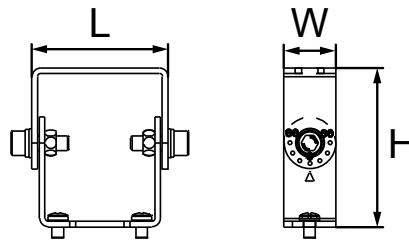
Catalog No.	Description	L	W	H
<b>KNM-LRG</b>	For FL - 30W, 50W (Comes Standard)	4.04" (102.5mm)	2.64" (67mm)	1.65" (42mm)

### Yoke



Catalog No.	Description	L	W	H
<b>FL-YOK-MD</b>	For FL-30W (Sold Separately)	4.94" (125.5mm)	6.61" (168mm)	1.3" (33.1mm)
<b>FL-YOK-LG</b>	For FL-50W (Sold Separately)	5.33" (135.5mm)	7.87" (200mm)	1.3" (33.1mm)

### Trunion



Catalog No.	Description	L	W	H
<b>FL-AUB-LG</b>	For FL - 30W, 50W (Sold Separately)	3.34" (85mm)	.98" (25mm)	2.32" (59mm)

**aleo**™  
LED LIGHTING

© 2021 Aleo Lighting, Inc. All rights reserved. For informational purposes only. Reproduction in whole or part is prohibited without prior written consent of the copyright owner. The information presented in this document does not form part of any quotation or contract, is believed to be accurate and reliable and may be changed without notice. No liability will be accepted by the publisher for any consequences of its use. Aleo Lighting reserves the rights make changes in specification at any time without notice.

Aleo Lighting, Inc.  
www.aleolighting.com  
10988 Bloomfield Ave.  
Santa Fe Springs, CA 90670  
Ph: 877-358-8825