

AL01 AREA LIGHT SPEC SHEET

AL01

PROJECT:

TYPE:

DATE:

CATALOG NUMBER:

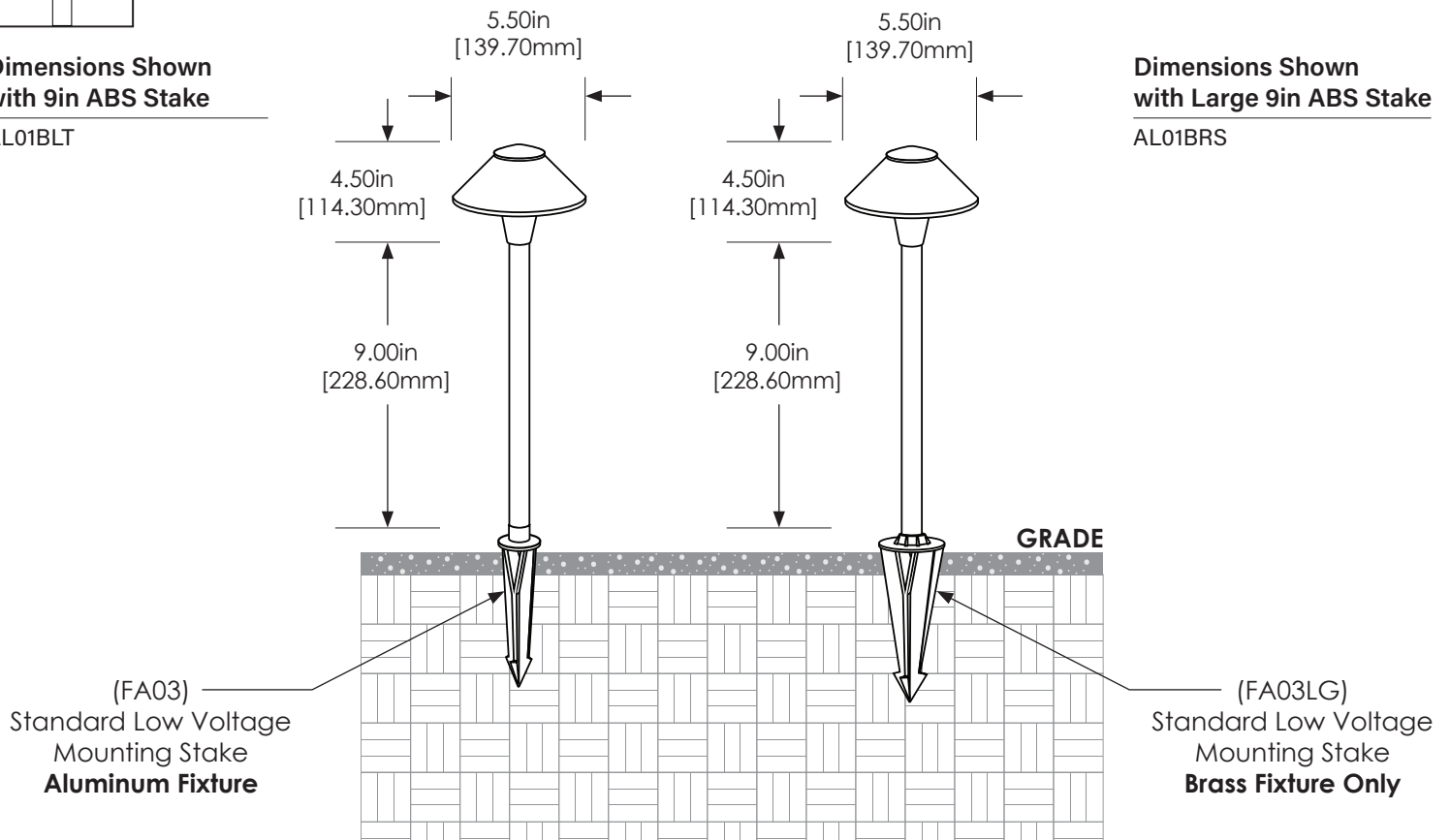
DIMENSIONS

Dimensions Shown with 9in ABS Stake




AL01BLT

Dimensions Shown with Large 9in ABS Stake

AL01BRS



SPECIFICATIONS

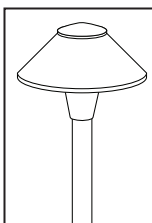
INTERNALS	VOLTAGE	12 Volt (Power with magnetic transformer) / 120 Volt
	WIRING	12 Volt: Standard black 3ft 18/2 zip cord from base of fixture. 120 Volt: Standard 18g, black, white, green (ground)
	CONNECTOR	Terminal ring star, insulated vinyl, 22-18 AWG #8, Red
EXTERNALS	HAT	Die cast 6061 aluminum or C27200 brass china hat 5.50" dia.
	HUB	Die cast aluminum or brass center hub. (Adjustable hub available, add -AH to part number. Example: AL01AHL12BLT)
	STEM	Extrusion, aluminum 6061, round sch 40 pipe, .840" OD x .622" ID x 9.00" L x .109" W Extrusion, brass, C27200, round sch 40 pipe, .840" OD, .622" ID x 9.00" L x .109" W
	MOUNT	Aluminum version: FA03 ABS black stake, .50" NPS tapped. Low voltage only. (More options available. See page 3.) Brass version: FA03LG ABS large black stake, .50" NPS tapped. Low voltage only. (More options available. See page 3.)
	FINISH	Aluminum: Black or Bronze texture (Standard) See page 4 for more powder coat options. Brass: Unfinished (Standard) See page 4 for more powder coat and acid treatment options.
 Click Icon to Download  	LISTINGS	ETL. IP65. CE IES files available for download.



FOCUS INDUSTRIES INC.
25301 COMMERCE CENTRE DRIVE
LAKE FOREST, CA. 92630
949.830.1350 | TOLL FREE: 888.882.1350
WWW.FOCUSINDUSTRIES.COM

DESIGNED
MANUFACTURED
IN THE USA





AL01 AREA LIGHT SPEC SHEET

AL01

PROJECT:

TYPE:

DATE:

CATALOG NUMBER:

ACCESSORIES

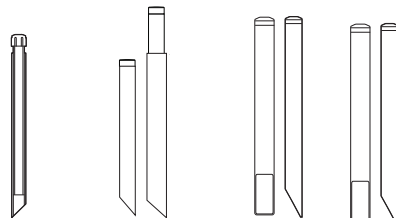
(Configure and order accessories separately)

Stakes



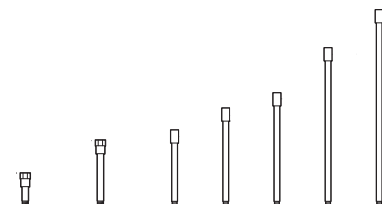
FA03 8.75" (12v) FA03LG 8.875" (12v) FA03RX 7.00" (12v) FA032P 8.235" (12v) FA033P 8.235" (12v)

Mounting Posts



FA01 15.00" (12v) FA24MDCSTPOST 13.00" to 16.00" (12v) FA25 20.00" (12v) FA26 20.00" (120-277v)

Extension Wands & Couplers



FA30-4 4.00" FA30-8 8.00" FA30 10.00" FA31 13.00" FA32 16.00" FA33 21.00" FA34 26.00" (12-277v)

Canopies



FA24/BRS 3.00" dia. (12v) FA24MDCST/BRS 2.65" dia. (12v) FA24MDCSTPC/BRS 2.65" dia. (12v) FA24LGSPUN/BRS 4.75" dia. (12v) FA24LGCST/BRS 4.75" dia. (12-277v) FA22LGCST/BRS 5.75" (12-277v)

Sprinkler Shield



FA97 1.75" dia. (12v)

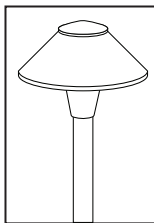
Note:
Required for
120 Volt



FOCUS INDUSTRIES INC.
25301 COMMERCE CENTRE DRIVE
LAKE FOREST, CA. 92630
949.830.1350 | TOLL FREE: 888.882.1350
WWW.FOCUSINDUSTRIES.COM

DESIGNED
MANUFACTURED
IN THE USA





AL01 AREA LIGHT SPEC SHEET

AL01

PROJECT:

TYPE:

DATE:

CATALOG NUMBER:

LED DATA



12v OMNI 3 DATA

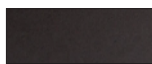
L#	CCT	CRI	WATTS	LUMENS	RATED HOURS
L10	3000K	80	3	300	50,000
L12	3000K	80	3	300	50,000
L13	2700K	80	3	270	50,000
L14	3000K	80	3	270	50,000
L15	2700K	80	3	270	50,000
L16	3000K	80	3	270	50,000
L17	Amber	~	3	(585-595nm)	50,000
L18	Amber	~	3	(585-595nm)	50,000

120v OMNI 3 DATA

L#	CCT	CRI	WATTS	LUMENS	RATED HOURS
L160	3000K	80	3	400	50,000

FINISHES

STANDARD FINISHES

Black Texture
(-BLT)Bronze Texture
(-BRT)

PREMIUM FINISHES

Dark Bronze
(-DBZ)Black Magic
(-BKM)White Gloss
(-WHT)White Texture
(-WTX)Stucco
(-STU)Chrome Powder
(-CPR)Weathered Iron
(-WIR)Weathered Brown
(-WBR)Rust
(-RST)Luna
(-LUN)Rubbed Verde
(-RBV)Hunter Texture
(-HTX)Mineral Bronze
(-BRZ)

CUSTOM FINISHES Supply RAL or Pantone here

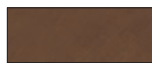
RAL #:

Need help finding a RAL color?
<https://www.ralcolor.com/>

PANTONE #:

Need help finding a Pantone color?
<https://www.pantone.com/color-finder>

ACID FINISHES Brass and Copper fixtures only

Acid Rust
Copper (-CAR)
Brass (-BAR)Black Acid Treatment
(-BAT)Acid Verde
Copper (-CAV)
Brass (-BAV)

FOCUS INDUSTRIES INC.
25301 COMMERCE CENTRE DRIVE
LAKE FOREST, CA. 92630
949.830.1350 | TOLL FREE: 888.882.1350
WWW.FOCUSINDUSTRIES.COM

DESIGNED
MANUFACTURED
IN THE USA

