



## High Lumen LED Power Floodlight

Catalog Number	
Project	Type



### FEATURES & SPECIFICATIONS

**APPLICATION** — The FRG is a high power LED flood light designed to perform and built to last. High performance optics maximize light intensity to provide consistent and uniform light patterns for a multitude of commercial, industrial or residential lighting applications.

**CONSTRUCTION** — The heavy duty housing is constructed of diecast aluminum. The optical assemblies are sealed in place using a silicone gasket for weather tight protection. Sealed wireway with anti-siphon leads.

**FINISH** — A Super Durable Polyester powder coat finish is electrostatically applied in our state of the art paint facility. Standard colors available: Black, Bronze, US Green, White. Custom colors available upon request.

**OPTICAL SYSTEM** — Made with a state of the art UV stabilized acrylic high performance refractive optical assemblies that use high transmissivity materials to achieve precise photometric distributions. Available in Type V Narrow, V Medium, and V Wide, and NSP beam configurations.

**ELECTRICAL SYSTEM** — Available in ANSI 3000K Warm White, 4000K Neutral White, or 5000K Cool White, 70 CRI min, propagated with CREE® XLamp XHP70 LED's. Available with 100-300V 50/60 Hz Class II power supply. LED's rated for over 50,000 hours at 25°C ambient temperature. 347V~480V input option available. 0-10V dimming. Built-in surge protection up to 10 kV. Built-in Active PFC Function >95%/ Full load. LED Power Supply conforms to UL8750 standards and is IP65 rated for wet locations. 0-10V dimming standard.

SERIES	HOUSING HEIGHT	LENGTH & WIDTH	EPA	WEIGHT
<b>FRG</b>	7.375"	9.375" x 7.65"	0.6	13 lbs

**MOUNTING** — Standard mounting option available is a 3/4" threaded knuckle mount or adjustable yoke mount with locking set screws. A tenon mount adaptor is available for mounting onto a 2-3/8" OD tenon (see Accessories).

**LISTINGS** — ETL Listed. Suitable for wet locations. Meets US and Canadian safety standards. -40°C to 50°C ambient operation. RoHS Compliant.

**WARRANTY** — The complete luminaire is covered by a 5-year limited warranty.

### ORDERING INFORMATION

Choose the bold face options for the appropriate luminaire configuration for your application and enter on the line above each fixture attribute. Accessories may be factory installed, depending on the particular accessory chosen, but still be ordered as a separate line item.

EXAMPLE:

**FRG C 18L T5N 1 AM BZ DLP**

FRG							
SERIES	COLOR TEMP	NOMINAL LUMENS	OPTICS	VOLTAGE	MOUNTING	FINISH	OPTIONS
	<b>C</b> = Cool White (5000K) <b>N</b> = Neutral White (4000K) <b>W</b> = Warm White (3000K)	<b>5L</b> = 5,000 <b>8L</b> = 8,000 <b>11L</b> = 11,000 <b>14L</b> = 14,000 <b>18L</b> = 18,000	<b>T5N</b> = Type V Narrow <b>T5M</b> = Type V Medium <b>T5W</b> = Type V Wide <b>NSP</b> = Narrow Spot	<b>1</b> = Multi-Volt <sup>1</sup> <b>2</b> = 347V-480V	<b>AM</b> = 3/4" Adjustable knuckle <b>YM</b> = Yoke Mount	<b>BZ</b> = Bronze <b>BK</b> = Black <b>GR</b> = US Green <b>WH</b> = White <b>SP</b> = Special <sup>2</sup>	<b>P1000PC</b> = Button Type Photocell 120V (1000w) <b>PC3</b> = Button Type Photocell 208/277V (1200w) <b>DLP</b> = Dimming Leads Pulled

### ACCESSORIES (Order as separate line items)

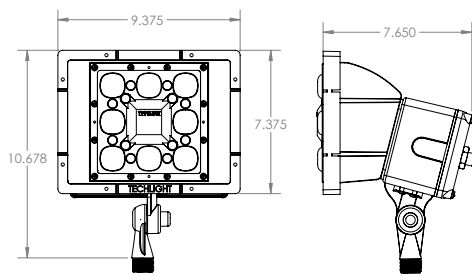
- FRG3SS** Three Sided Shield
- FRG4SS** Four Sided Shield
- TA34T238** Tenon Adaptor for 2-3/8" OD Tenon (for use with adjustable knuckle only)

### NOTES

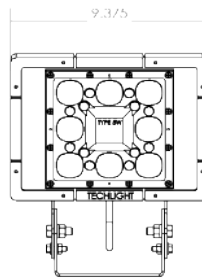
- 1= Multi-Volt is an auto ranging power supply from 100V to 300V input.
- 2= Custom RAL color matching is available. Contact your sales representative for additional info.

### AVAILABLE FIXTURE DIMENSIONS

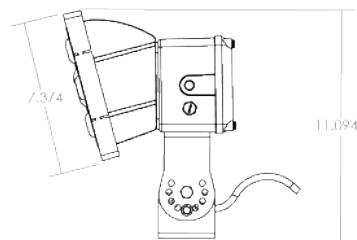
Dimensions shown are for fixture bodies only. Mounting options must be ordered separately.



3/4" - 14 NPS Male Thread Arm



1-1/2" x 1/4" Thick formed aluminum yoke bracket



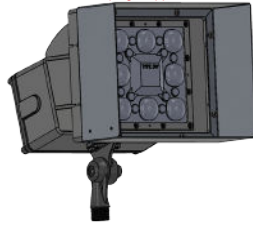
# FRG High Performance Floodlight

## FIXTURE & MOUNTING ACCESSORIES/OPTIONS

**FRG3SS**  
Three Sided Shield



**FRG4SS**  
Four Sided Shield  
*\*Do not use for up light application.*



**TA34T238**  
Tenon Adaptor for 2-3/8" OD Tenon



**P1000PC**  
Button-Type Photocell



## LUMINAIRE CHARACTERISTICS

### 5L

# of Boards	Drive Current	Color Temp	Delivered Lumens				System Wattage	L70 @ 25°C	Amperage Draw			
			TYPE 5N	TYPE 5M	TYPE 5W	NSP			120V	208V	240V	277V
1 Board	350 mA	Neutral White (4000K)	5451	5743	5815	5205	42	>50K	0.35A	0.20A	0.18A	0.15A
1 Board	350 mA	Cool White (5000K)	5451	5743	5815	5205	42	>50K	0.35A	0.20A	0.18A	0.15A

### 8L

# of Boards	Drive Current	Color Temp	Delivered Lumens				System Wattage	L70 @ 25°C	Amperage Draw			
			TYPE 5N	TYPE 5M	TYPE 5W	NSP			120V	208V	240V	277V
1 Board	600 mA	Neutral White (4000K)	7750	8165	8268	7401	60	>50K	0.50A	0.29A	0.25A	0.22A
1 Board	600 mA	Cool White (5000K)	7750	8165	8268	7401	60	>50K	0.50A	0.29A	0.25A	0.22A

### 11L

# of Boards	Drive Current	Color Temp	Delivered Lumens				System Wattage	L70 @ 25°C	Amperage Draw			
			TYPE 5N	TYPE 5M	TYPE 5W	NSP			120V	208V	240V	277V
1 Board	850 mA	Neutral White (4000K)	11000	11415	11525	11000	86	>50K	0.71A	0.41A	0.36 A	0.31A
1 Board	850 mA	Cool White (5000K)	11000	11476	11586	11000	86	>50K	0.71A	0.41A	0.36 A	0.31A

### 14L

# of Boards	Drive Current	Color Temp	Delivered Lumens				System Wattage	L70 @ 25°C	Amperage Draw			
			TYPE 5N	TYPE 5M	TYPE 5W	NSP			120V	208V	240V	277V
1 Board	1100mA	Neutral White (4000K)	14000	14158	14294	14000	112	>50K	0.93A	0.54A	0.47A	0.40A
1 Board	1100 mA	Cool White (5000K)	14000	14234	14370	14000	112	>50K	0.93A	0.54A	0.47A	0.40A

### 18L

# of Boards	Drive Current	Color Temp	Delivered Lumens				System Wattage	L70 @ 25°C	Amperage Draw			
			TYPE 5N	TYPE 5M	TYPE 5W	NSP			120V	208V	240V	277V
1 Board	1400 mA	Neutral White (4000K)	18165	18352	16474	16090	140	>50K	1.17A	0.68A	0.59A	0.51A
1 Board	1400 mA	Cool White (5000K)	18165	18352	16474	16090	140	>50K	1.17A	0.68A	0.59A	0.51A

**WARNING:** Maintenance performed including the replacement of LED bricks while power is still supplied to the luminaire may result in system failures and will void the warranty.



**TECHLIGHT**  
INNOVATION IN ILLUMINATION

2707 SATSUMA | DR. DALLAS, TX 75229 | PH: 800.225.0727 | FX: 214.350.0591 | [www.techlight.com](http://www.techlight.com)

\*\*All dimensions and specifications are subject to change without notice.\*\*

REV: 20230731-04