

1. Use Template (supplied) to mark location of mounting holes and wire through hole
Hint: Use a sharpie or other marker to clearly designate the mounting holes



2. Drill three 1/4" holes using a masonry drill bit



3. Insert anchor bolts into the two mounting holes
Note: Do not use anchor bolt in the wire through hole



4. Remove Back plate from fixture



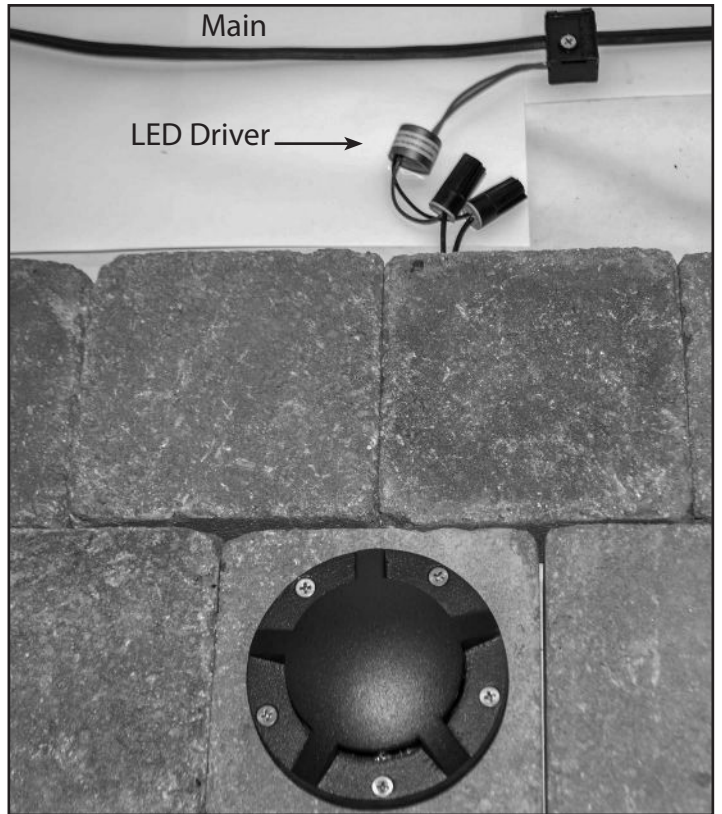
5. Feed wire through wire hole



6. Attach fixture back plate to the surface using the previously drilled mounting holes. Note: We recommend using silicon to seal the back plate to the surface



7. Place the gasket on the mounting plate

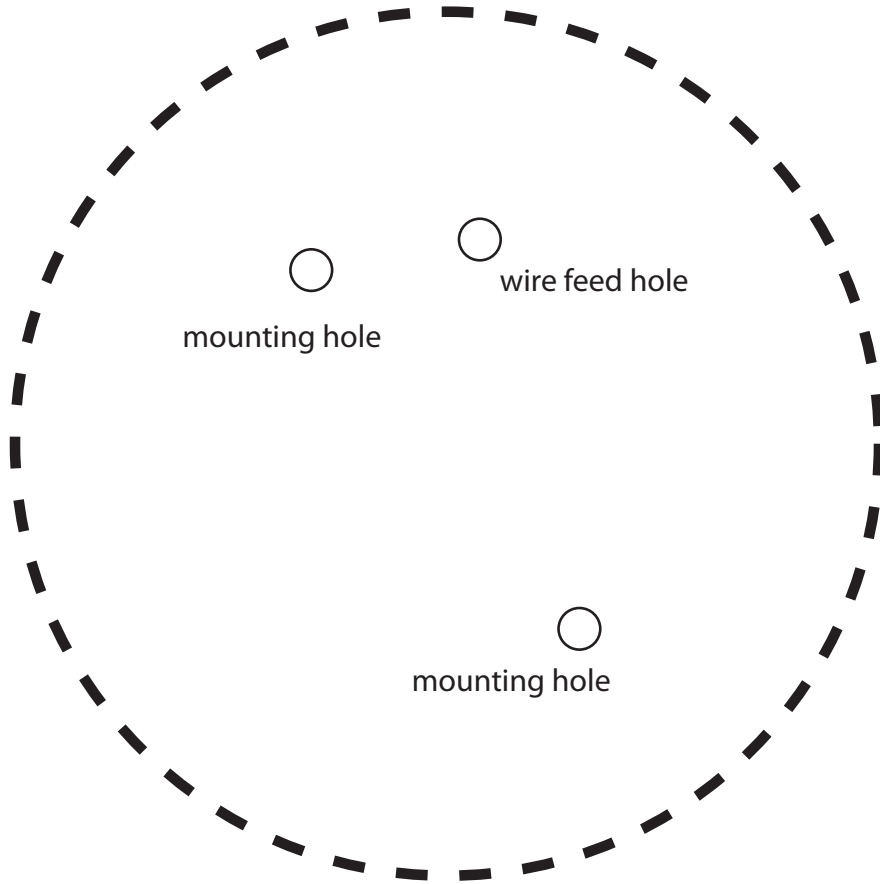


8. Reattach the fixture cover and connect lead wire **to LED driver** before connecting to main power supply



SL-20-SM-M-SM Mounting Template

Inspected By:

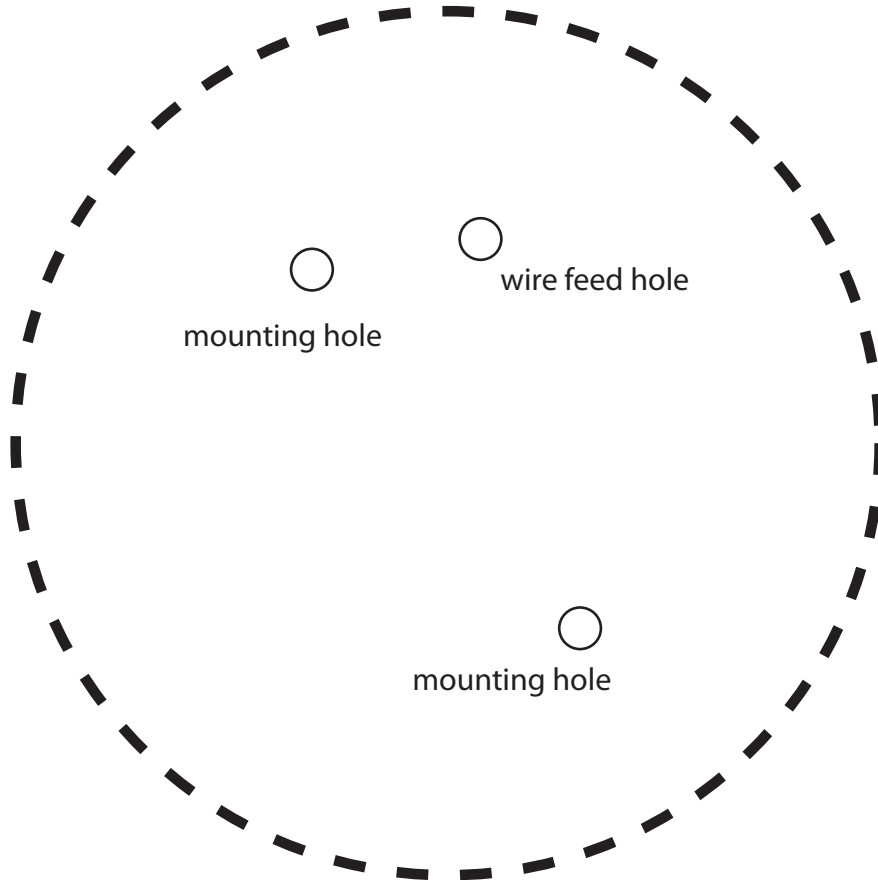


For Questions Call: 888.882.1350



SL-20-SM-M-SM Mounting Template

Inspected By:



For Questions Call: 888.882.1350