

Catalog Number

Project

Type

## FEATURES & SPECIFICATIONS

**APPLICATION** — The TH series of tenon adaptors were designed to adapt an existing vertical 2-3/8" OD tenon to provide one or more horizontal 2-3/8" OD tenon sto allow mounting of a fixture via an adjustable slip fitter (2AF).

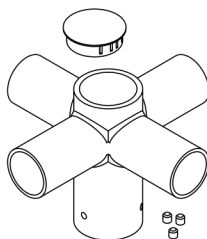
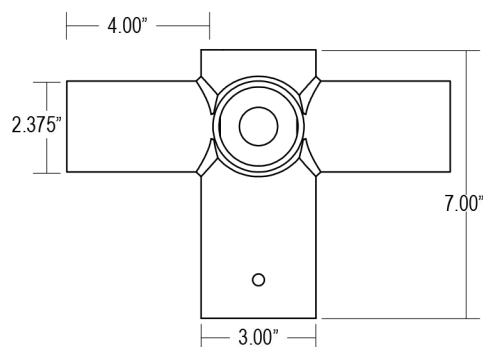
**CONSTRUCTION** — The heavy duty tenon is constructed of aluminum tubing. Stainless steel hardware and top cap provided.

**FINISH** — A Super Durable Polyester powder coat finish is electrostatically applied in our state of the art paint facility. Standard colors available: Black, Bronze, US Green, White. Custom colors available upon request.



## Horizontal Tenon Adaptors

# TH



**TH490** shown. All tenon configurations conform to the same tubing and tenon dimensions.



## ORDERING INFORMATION

Choose the bold face options for the appropriate luminaire configuration for your application and enter on the line above each fixture attribute. Accessories may be factory installed, depending on the particular accessory chosen, but still be ordered as a separate line item.

Example: **TH290-BZ**

TH		
Series	Tenon Configuration	Finish
<b>TH</b>		
<b>190</b>	1 Tenon	<b>BK</b> Black
<b>290</b>	2 Tenons at 90°	<b>BZ</b> Bronze
<b>2180</b>	2 Tenons at 180°	<b>GR</b> US Green
<b>390</b>	3 Tenons at 90°	<b>WH</b> White
<b>3120</b>	3 Tenons at 120°	<b>SP</b> Special <sup>1</sup>
<b>490</b>	4 Tenons at 90°	

### NOTES

- 1 Custom RAL color matching is available. Contact your Techlight sale representative for additional information.