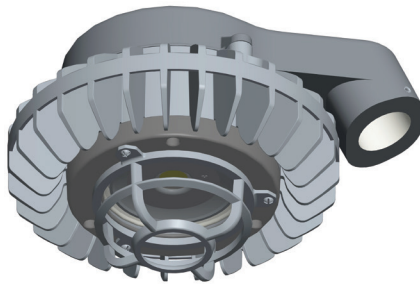


HAZLED™ 80W, 42W, 26W STANCHION INSTRUCTIONS



IMPORTANT

READ CAREFULLY BEFORE INSTALLING FIXTURE. RETAIN THESE INSTRUCTIONS FOR FUTURE REFERENCE.

Fixtures must be wired in accordance with the National Electrical Code and all applicable local codes. Proper grounding is required for safety. THIS PRODUCT MUST BE INSTALLED IN ACCORDANCE WITH THE APPLICABLE INSTALLATION CODE BY A PERSON FAMILIAR WITH THE CONSTRUCTION AND OPERATION OF THE PRODUCT AND THE HAZARDS INVOLVED.

WARNING: Make certain power is OFF before installing or maintaining fixture. No user serviceable parts inside.

SAFETY INSTRUCTIONS

CAUTION: TO REDUCE THE RISK OF IGNITION OF HAZARDOUS ATMOSPHERES DISCONNECT THE LUMINAIRE FROM SUPPLY CIRCUIT BEFORE OPENING. KEEP TIGHTLY CLOSED WHEN IN OPERATION.

SUITABLE FOR USE IN THE FOLLOWING HAZARDOUS AREAS AS DEFINED BY THE NATIONAL ELECTRIC CODE: CLASS I DIV.2 GROUP A, B, C, D. SUITABLE FOR WET LOCATIONS.

WARNING: FOR 26W UNITS DO NOT EXCEED OPERATING TEMPERATURES OF **160°C (320°F)** AND AMBIENT TEMPERATURE OF **55°C (131°F)**.

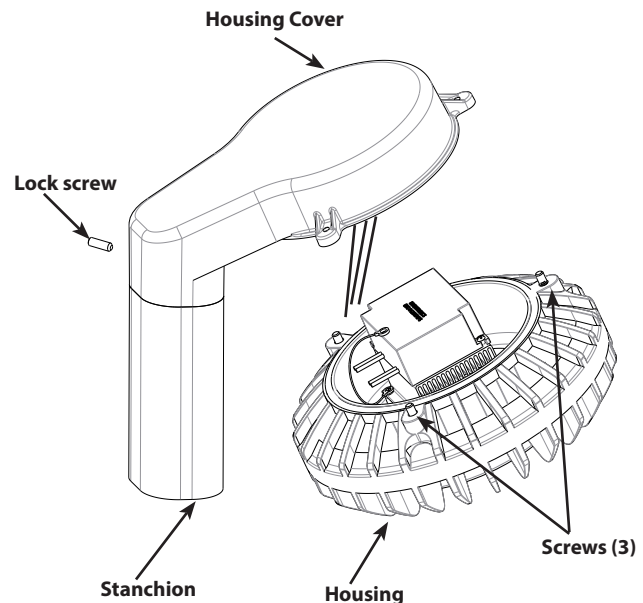
WARNING: FOR 42W UNITS DO NOT EXCEED OPERATING TEMPERATURES OF **260°C (500°F)** AND AMBIENT TEMPERATURES OF **40°C (104°F)**.

WARNING: FOR 80W UNITS DO NOT EXCEED OPERATING TEMPERATURES OF **236°C (456°F)** AND AMBIENT TEMPERATURES OF **55°C (131°F)**.

MOUNTING TO A STANCHION

HAZLED is designed for use indoors and outdoors in wet locations, where moisture, dirt, corrosion, vibration, and rough usage may be present.

1. **Housing** can be mounted on 1 1/2" stanchion with NPT.
2. Remove the **Housing Cover** from the **Housing** by loosening the three screws. Mount the **Housing Cover** on the **Stanchion** and secure it with the **Lock Screw**.
3. Feed supply wires through **Stanchion** into the **Housing Cover**.
4. Bring **Housing** up to the **Housing Cover**. Complete wiring the fixture as shown in the wiring section with UL approved connectors.
5. Align the **Housing** on the **Housing Cover** and tighten Screws (3) along with washers. Apply torque of 105 lbf*in = 12 N*m. Be sure the gasket is in place.



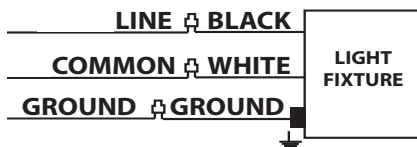
HAZLED™ 80W, 42W, 26W STANCHION INSTRUCTIONS

WIRING

CAUTION: Make sure the supply voltage is the same as the luminaire voltage. WARNING: Use proper supply wiring as specified on the luminaire.

Driver permits operation at 50 or 60Hz.

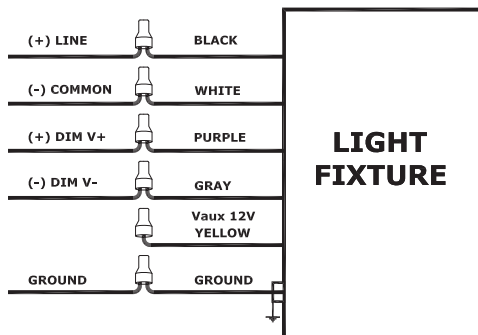
1. Connect the black fixture lead to the (+) LINE supply lead.
2. Connect the white fixture lead to the (-) COMMON supply lead.
3. Connect the bare copper Ground wire from fixture to supply ground.



0-10V DIMMABLE WIRING

Universal voltage driver permits operation at 120V thru 277V, 50 or 60 Hz. For 0-10V Dimming, follow the wiring directions as in fig. 2.

1. Connect the black fixture lead to the (+) LINE supply lead.
2. Connect the white fixture lead to the (-) COMMON supply lead.
3. Connect the GROUND wire from fixture to supply ground. Do NOT connect the GROUND of the dimming fixture to the output.
4. Connect the purple fixture lead to the (V+) DIM lead.
5. Connect the gray fixture lead to the (V-) DIM lead.
6. Cap the yellow fixture lead, if present. Do NOT connect.



Note: These instructions do not cover all details or variations in equipment nor do they provide for every possible situation during installation operation or maintenance.

CLEANING & MAINTENANCE

CAUTION: Be sure housing and lens temperature are cool enough to touch. Do not clean or maintain while fixture is energized.

1. Clean glass lens with non-abrasive glass cleaning solution.
2. Do not open fixture to clean the LED. Do not touch the LED.
3. All gaskets seals must be clean and undamaged.

TROUBLESHOOTING

1. Check that the line voltage at fixture is correct. Refer to wiring directions.
2. Be sure fixture is grounded properly.

ACCESSORIES

GUARDS

with Die Cast Guard.....suffix "-DG"

with Wire Guard.....suffix "-G"