

DIRECTIONAL SURFACE MOUNT SL-25 SERIES



TYPE

SPECIFICATIONS

CONSTRUCTION: Cast aluminum or brass directional bullet; matching stamped aluminum, or brass FA-111-SM J-box and adjustable aiming bracket

LENS: High impact clear tempered convex glass

O-RING: High temperature red silicone

LAMP SUPPLIED: 20w MR16 FL(BAB) 5000 hours average rating (50w max)

LAMP OPTIONS: We recommend ARROW 4w LED (-LED) or 6w LED (-LED6W); 50,000 hour or ARROW SAVER 4w LED (-LAS); 40,000 hour

SOCKET: High temperature ceramic GU5.3 bi-pin with 250°C silicone lead wires

WIRING: Black 3 foot 18/2 zip cord from base of fixture (12v only)

For 25 foot 16/2 fixture lead wire add -25F to catalog number.

CONNECTION: FA-05 Quick Connector (not supplied) from fixture to main cable (12/2, 10/2 or 8/2 only)

MOUNTING: FA-111-SM surface mount J-box

FINISH: Aluminum-Black texture polyester powder coat. Optional finishes available Brass-Unfinished brass. Optional finishes available.

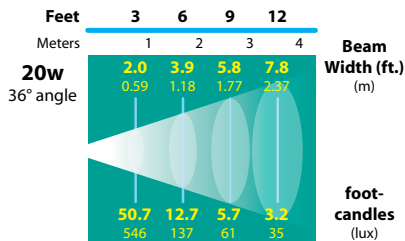


SL-25-BRS

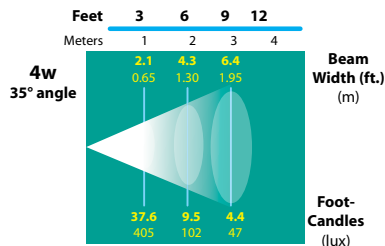
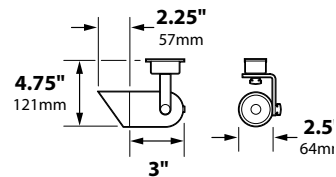
ORDERING INFORMATION

CATALOG NO.	DESCRIPTION	LAMP	SHIP WEIGHT
SL-25-BLT	Cast Aluminum Surface Mount Bullet with Aiming Bracket and J-Box	20w MR16 FL(BAB)	2.0 lbs.
SL-25-BRS	Cast Brass Surface Mount Bullet with Aiming Bracket and J-Box	20w MR16 FL(BAB)	3.0 lbs.

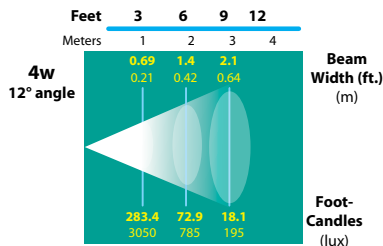
LIGHT DISTRIBUTIONS AND PHOTOMETRICS



FL-13-BAB-FG



FL-LED-MR16-BAB



FL-LED-MR16-ESX



JOB INFORMATION	
Type:	Date:
Job Name:	
Cat. No.:	
Lamp(s):	
Specifier:	
Contractor:	
Notes:	

BEAM/GLARE CONTROL ACCESSORIES

FA-08-21	Round 1/8"Hex Cell Louver
FA-11-BLUE	Blue Tempered Glass Lens
FA-11-GREEN	Green Tempered Glass Lens
FA-98	Linear Spread Tempered Glass Lens
FA-104	Wide Spread Tempered Glass Lens Softener

Black Texture (Standard)	Antique Verde	Bronze Texture	Camel	White Texture	Hunter Texture	Rust	Weathered Iron	Weathered Brown	Stucco	Rubbed Verde	Chrome Powder	Acid Rust	Acid Verde	Black Acid Treatment
-BLT	-ATV	-BRT	-CAM	-WTX	-HTX	-RST	-WIR	-WBR	-STU	-RBV	-CPR	-BAR/CAR	-BAV/CAV	-BAT