

POLAR 2 RGB NEON



Polar 2 RGB Neon

- 120° beam angle provides a strong line of light
- Opaque PVC jacket with a white PVC backing
- Parallel wiring to each LED ensures that if one LED goes out, the rest of the cutting increment stays lit
- 3-in-1 5050 SMD LEDs with 1/2" spacing
- Clips, clear plastic track, or aluminum channel available for a variety of mounting purposes including coves and ledges

Specifications:

| | |
|---------------|--------------------------|
| Series | RGB-NF |
| Input voltage | 24V DC |
| Colors | RGB |
| Wattage | 2.7W/ft |
| Reel length | 50ft |
| Dimensions | 5/8"W x 1-1/8"H |
| Maximum run | 44ft (24V) |
| Cuttability | 12" |
| Dimming | 10-100% with controller* |
| Rating | cETLus, Indoor/outdoor |
| Rated life | 30,000 hours |

*Requires RGB Controller (see page 69). Per the NEC, switched wall outlets cannot be used with wall dimmers.

†cETLus Listing for 24V is valid for lengths cut to 65 feet or less

POLAR 2 RGB NEON



65ft reel • RGB LEDs • Opaque White Jacket
RGB-NF-24V-65 (24V)

65ft Polar 2 Neon RGB Reels include (1) attached factory-molded 5ft power cord (without plug, without inverter) and cap on dead end

POLAR 2 RGB NEON ACCESSORIES



RGB-NF-CONKIT-NP
24V power connection kit
Includes: (1) 5ft power cord (without plug, without inverter), (1) power pin, (1) end cap and (2) 4" sections of shrink tube



RGB-NF-JUMP.5 6"
RGB-NF-JUMP3 3ft
RGB-NF-JUMP10 10ft
RGB-NF-JUMP20 20ft
Jumper (linking) cable
Includes: (2) pin connectors and (2) 4" sections of shrink tube



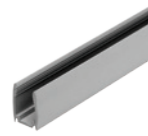
RGB-NF-INVS
Invisible Splice Kit
Includes: (1) splice pin and (1) 3" sections of shrink tube (Bag of 10)



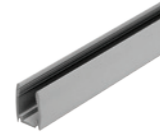
P2-NF-ENDS
Clear plastic end caps
(Bag of 10)



P2-NF-CLIPS
2" aluminum mounting clips with mounting screws
(Bag of 10)



P2-NF-TRACK-3
3ft plastic mounting track
23/32"w x 13/32"h



P2-NF-CHAN-3
3ft aluminum mounting track
23/32"w x 25/32"h



RF-RGBW-3Z
RGB Touch Wall Control
(3 zones / 10 presets)
(Wireless / RF)



RF-RGBW-USB
RGB (8 zone)
Remote Control
(Wireless / RF)



RF-RGBW-3AAA
RGB (8 zone)
Remote Control
(Wireless / RF)



REC-5A-4Z-WiFi
RF / WiFi Receiver
(24V DC input)



REC-5A-4Z
RF Receiver
(24V DC input)



LED-DR30-24 (30W)
24V Driver
cURus (dry)



LED-DR60-24 (60W)
LED-DR-100-24 (100W)
LED-DR-150-24 (150W)
24V Drivers
cURus (wet)

For more sophisticated color control using DMX control options or for multiple zone control using the Trulux app, please contact American Lighting directly