

POLAR 2 MINI NEON



A great replacement for conventional neon. This Mini Neon has the same robust construction as Polar 2 Neon, but with higher impact due to the thin lens design. Available in 120V with eight color choices.

Performance

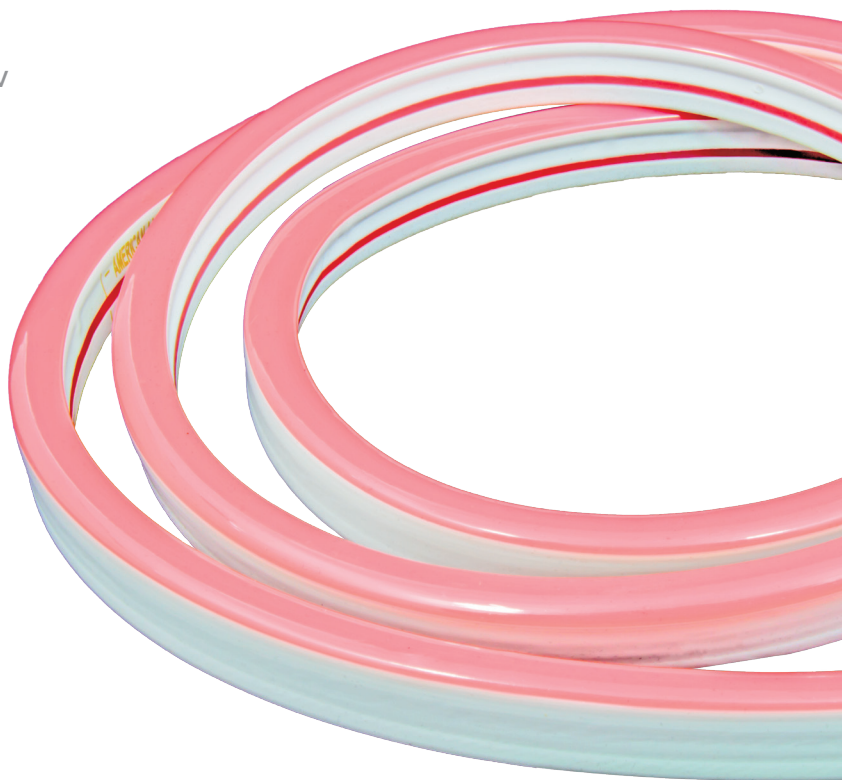
- 1/3" LED spacing and opaque jacket provide uniform appearance for direct view applications
- 3528 SMD LEDs emit up to 90 lumens per foot
- Dimmable with most standard, low voltage magnetic and low voltage electronic dimmers* (minimum loads may apply)
- Suitable for indoor and outdoor use, 120V 150ft reels are c/ETL/us Listed unless cut

Construction

- Reels have attached power connection and end cap on dead end; four additional MINI-P2-NF-CONKIT-8A kits are included with each 120V reel
- Flexible rubber housing with frosted or colored PVC lens are protected with UV inhibitor

Installation

- Use clips to hold in place for most indirect view installations
- Aluminum mounting channel should be used for direct view installations and when mounting to the underside of a shelf or ledge to prevent sagging



Specifications

Series	MINI-P2-NF
Input voltage	120V AC
Colors	WW/WH/AY/BL/GR/OR/PI/RE
CRI or nm	See individual product
Wattage	2.4W/ft
Lumens	See individual product
Reel length	150 feet
Maximum run	150 feet
Cuttability	18"
Beam angle	120°
Dimming	10-100% with most dimmers*
Material	Opaque PVC jacket, white PVC back
Rating	c/ETL/us Listed for wet locations**
Dimensions	7/16"W x 3/4"H
Switching	Wall control
Mounting	Clips and/or mounting channel
Linking	See linking cables
LED type	3528 SMD LEDs (36 per foot)
Rated life	30,000 hrs

*Per the NEC, switched wall outlets cannot be used with wall dimmers

**c/ETL/us Listing is void if product is cut.

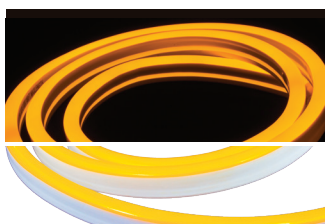
Polar 2 Mini Neon



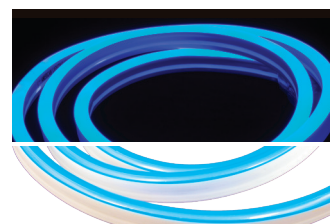
MINI-P2-NF-WW (120V)
Warm White LEDs • 79CRI
Opaque white jacket
2700K • 63Lm/ft



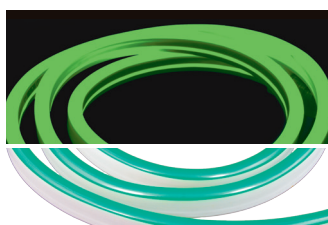
MINI-P2-NF-WH (120V)
Bright White LEDs • 78CRI
Opaque white jacket
5000K • 63Lm/ft



MINI-P2-NF-AY (120V)
White LEDs
Opaque Amber jacket
590nm • 21Lm/ft



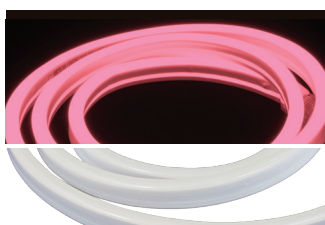
MINI-P2-NF-BL (120V)
Blue LEDs
Opaque blue jacket
469nm • 5Lm/ft



MINI-P2-NF-GR (120V)
Green LEDs
Opaque green jacket
521nm • 25Lm/ft



MINI-P2-NF-OR (120V)
Orange LEDs
Opaque amber jacket
606nm • 12Lm/ft



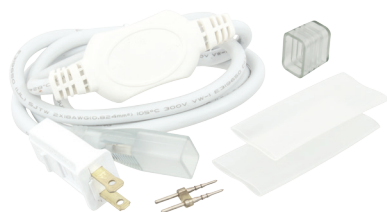
MINI-P2-NF-PI (120V)
Pink LEDs
Opaque white jacket
610nm • 17Lm/ft



MINI-P2-NF-RE (120V)
Red LEDs
Opaque red jacket
619nm • 5Lm/ft

*Color photos are for representational purposes and actual color may vary

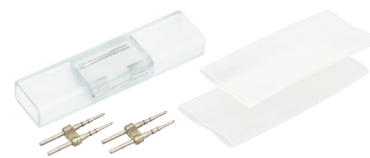
Polar 2 Mini Neon Accessories



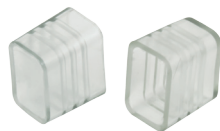
MINI-P2-NF-CONKIT-8A
120V power connection kit
Includes: (1) 120V AC 5ft power cord with 8A inverter, (1) power pin, (1) end cap and (2) 4" sections of shrink tube



MINI-P2-NF-JUMP3 6" cable
MINI-P2-NF-JUMP3 3ft cable
MINI-P2-NF-JUMP10 10ft cable
MINI-P2-NF-JUMP20 20ft cable
Jumper (linking) cable
Includes: (2) power pins and (2) 4" sections of shrink tube



MINI-P2-NF-INVS
Invisible splice kit
Includes: (1) power pin and (2) 4" sections of shrink tube (Qty of 10)



MINI-P2-NF-ENDS
Clear plastic end caps
(Qty of 10)



MINI-P2-NF-CLIPS
2" aluminum mounting clips
with (2) mounting screws
(Qty of 10)



MINI-P2-NF-CHAN-3
3ft aluminum mounting track
1/2"W x 23/32"H