

Catalog Number

Project

Type

FEATURES & SPECIFICATIONS

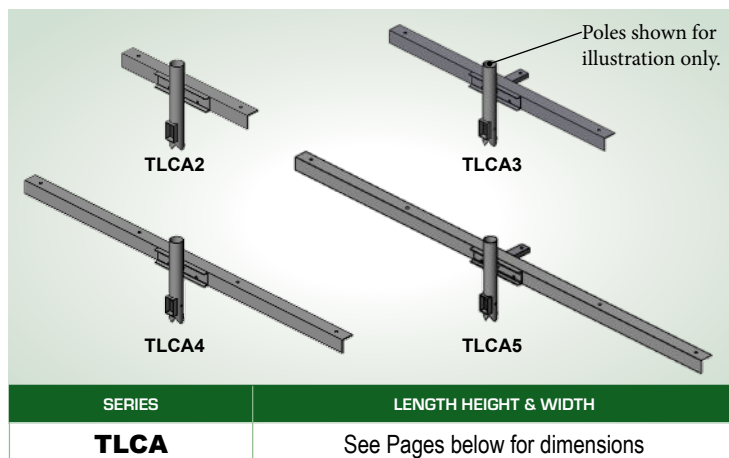
APPLICATION — The TLCA Series of Angle Iron Cross Arms is designed for use with a variety of Techlight lighting fixtures and is intended **exclusively for factory installation on Techlight Round or Round Tapered Steel Poles**. These cross arms are welded and pre-drilled at the factory to match the exact pole and arm configuration ordered. Cross arms are available to support 2 to 5 fixtures per pole.

CONSTRUCTION — Each cross arm is fabricated from heavy-duty rolled steel, formed into a 4" x 4" x 1/4" thick angle iron. Arms are pre-drilled with 7/8" (0.88") diameter mounting holes to accommodate standard thru-bolt mounting or may be configured with a 2-3/8" OD tenon for slip fitter mounting.

FINISH — A Super Durable Polyester powder coat finish is electrostatically applied in our state-of-the-art paint facility. Standard colors include Black, Bronze, US Green, and White. Custom colors are available upon request.

TLCA SERIES

Angle Iron Cross Arms w/Techlight Steel Poles



ORDERING INFORMATION

Choose the bold face options for the appropriate luminaire configuration for your application and enter on the line above each fixture attribute. Accessories may be factory installed, depending on the particular accessory chosen, but still be ordered as a separate line item.

EXAMPLE:

TLCA 4 BZ

TLCA			
SERIES	OPTIONS	MOUNTING	FINISH
	2 = 2 Light Bracket 3 = 3 Light Bracket 4 = 4 Light Bracket 5 = 5 Light Bracket	Blank = Holes for thru bolts T = 2-3/8" OD Tenons	BZ = Bronze BK = Black GR = US Green WH = White SP = Special ¹ GLVP = Galvanized ²

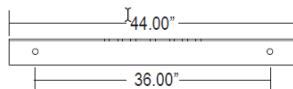
NOTES

1 = Custom RAL color matching is available. Contact your Techlight sale representative for additional information.

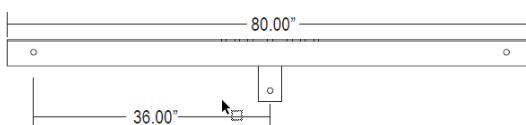
2 = Must specify paint color in addition to these coating options (Example GLVPBZ; TGBZ; GLVPTGBZ).

FIXTURE DIMENSIONS

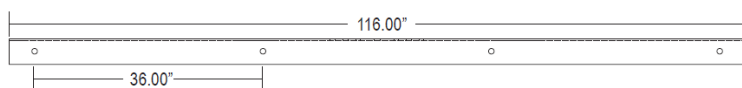
TLCA2
Angle Iron Cross Arm 2 Light



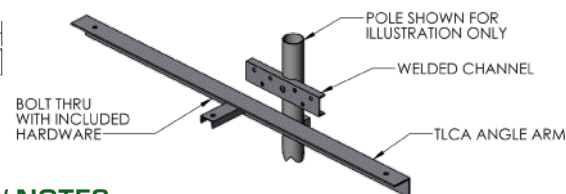
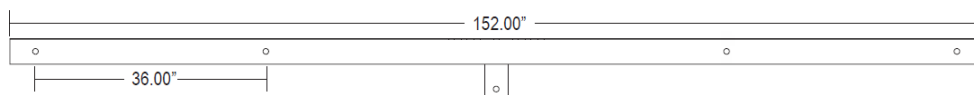
TLCA3
Angle Iron Cross Arm 3 Light



TLCA4
Angle Iron Cross Arm 4 Light



TLCA5
Angle Iron Cross Arm 5 Light



Additional NOTES

- TLCA cross arms **must be ordered with a Techlight steel pole**.
- These cross arms are **not sold separately** and **cannot be installed on existing poles**.
- Poles are prepped with welded brackets and additional handholes as required.

CATALOG NUMBER	BRACKET WEIGHT (LBS.)	BRACKET EPA (FT2)	100 MPH		120 MPH		MAX MOUNTING HEIGHT (FT.)
			MAX PER FIXTURE EPA	MAX PER FIXTURE WEIGHT (LBS.)	MAX PER FIXTURE EPA	MAX PER FIXTURE WEIGHT (LBS.)	
TLCA2	40	1.6	4	75	4	75	50
TLCA3	65	2.9	4	75	4	75	50
TLCA4	95	4.2	2.5	55	2.5	55	50
TLCA5	125	5.5	2.4	45	1.3	35	50



TLCA Angle Iron Cross Arms w/Techlight Steel Poles

ADDITIONAL FIXTURE DIMENSIONS

