



TECHLIGHT™
INNOVATOR AND LEADER IN THE LIGHTING INDUSTRY

| | |
|----------------|------|
| Catalog Number | |
| Project | Type |

FEATURES & SPECIFICATIONS

APPLICATION — The TDBX line of LED Landscape Burial Lights are the most versatile LED fixtures on the market today. Various beam spreads and color temperatures allow for a customized finish to any property. The high end commercial grade system was designed for 120V-277V operation commercial applications.

CONSTRUCTION — The rough-in housing is made of black 25% glass filled polyester composite that will not flake, peel or corrode. The LED light source is housed within an 88% copper bronze alloy heat sink module for maximum heat dissipation. Internal cabling features anti-siphon wiring to prevent water intrusion as well as IP68 quick connects for quick change out and ease of installation. Silicone O-rings work with the CNC precision machined components to insure proper sealing. All fasteners provided are stainless steel. Trim plate made of 88% copper bronze alloy.

OPTICAL SYSTEM — A molded polycarbonate 82mm compact reflector is optimized for use with the LED light source allowing the fixture to be compact while using high density modern COB LEDs (80 CRI standard). The reflector smooths out and removes any unwanted color-over-angle artifacts from the beam. A 15mm low-iron tempered glass lens protects the light source. An aiming adjustment screw allows the optical assembly to be tilted up to 15° in any direction and locked into place.

ELECTRICAL SYSTEM — Fixture operates at 120V-277V. Compatible with TRIAC (forward-phase or leading-edge), ELV (reverse-phase or trailing-edge) and 0-10 V dimmers. Order DLP option if dimming of TDBX luminaire is required. 10kV internal surge protection provided standard.

MOUNTING — Fixtures are designed to be in-ground burial lights and should be installed according to the installation instructions made available by Techlight. Proper drainage and substrate must be provided around the fixture. Two 3/4" and two 1/2" conduit entries are supplied on the underside of the housing. 1/2" conduit side entries available upon request. Concrete pour kits available (see Accessories).

ORDERING INFORMATION

Choose the bold face options for the appropriate luminaire configuration for your application and enter on the line above each fixture attribute. Accessories may be factory installed, depending on the particular accessory chosen, but still be ordered as a separate line item.

TDBX w/Rough In Housing (RIH) Included

If there is no need to **pre-ship** the RIH, then use this **Ordering Chart ONLY** plus **Accessories**, shown below. This is the ordering chart for the **Complete Fixture**.

| TDBX | | | | | | |
|--|-------------------------------|---------------------------------|------------------------------------|--|--------------------------------------|---------|
| SERIES | NOMINAL DISTRIBUTION | NOMINAL OUTPUT | COLOR TEMP | VOLTAGE | TRIM FINISH | OPTIONS |
| 15DO = 15° Optic ¹ | 25L = 2500 Lumens, 25W | CW = Cool White 5000K | 1 = Multi-Volt ² | BLANK = Natural Brass Finish ³ | SCE = 1/2" Side Conduit Entry | |
| 20DO = 20° Optic ¹ | 4L = 4000 Lumens, 36W | NW = Neutral White 4000K | | BZ = Bronze Powder Coat Finish ⁴ | DLP = Dimming Leads Pulled | |
| 25DR = 25° Reflector ¹ | 45L = 4500 Lumens, 42W | WW = Warm White 3000K | | BK = Black Powder Coat Finish ⁴ | SRL = Slip Resistant Lens | |
| 35DO = 35° Optic ¹ | 5L = 5000 Lumens, 48W | | | AC = Aged Copper Finish Plated | | |
| 40DR = 40° Reflector ¹ | 6L = 6000 Lumens, 56W | | | BC = Bright Copper Finish Plated | | |
| 45DO = 45° Optic ¹ | | | | BN = Brushed Nickel Finish Plated | | |
| 60DR = 60° Reflector ¹ | | | | | | |
| 90DR = 90° Reflector ¹ | | | | | | |

ACCESSORIES (Order as separate line items)

TDBX-PK (126926)** Concrete/Paver Pour Kit (Accessory – not a bundled kit)
(Must be added if fixture is installed in Concrete or Paver.)

TDBX SCR TAMP RESIST Tamper Resistant Screw Kit





**** For Installations in Concrete or Pavers You MUST include TDBX-PK (126926) on a separate line. ****

NOTES

- Distribution patterns are achieved using one of two internal optical systems, depending on the selected beam angle: a **refracting Optic** or a **Reflector** and does not require separate ordering. (See "Internal Optical Systems" info below)
- Multi-Volt is an auto ranging power supply from 120V to 277V input.
- Additional cost for all Trim Finish Coats, outside of "Blank", natural brass finish. See Price Guide for additional pricing info.
- Bronze and Black finishes consist of a polyester powder coat applied to the exposed areas of the cast lens frame only. If no finish is specified ("Blank" option), the lens frame will be provided as natural brass finish.

Internal Optical Systems (Distribution Control)

| | |
|--|---|
|  <p>Refracting Optic A 90 mm clear PMMA molded optic designed specifically for use with COB LEDs. This refracting optic is used to produce smooth, consistent beam patterns for specific beam angles, providing precise light control with minimal artifacts.</p> |  <p>Reflector A compact 82 mm molded polycarbonate reflector optimized for high-efficiency COB LEDs. This reflector-based optical system allows the fixture to remain compact while shaping the beam through controlled reflection.</p> |
|--|---|

TDBX SERIES

LED DIRECT BURIAL INGROUND LIGHT



| SERIES | HOUSING HEIGHT | DIAMETER |
|-------------|----------------|----------|
| TDBX | 10.87" | 9.50" |

Rough-in housing may be pre-shipped (see Ordering Chart on pg2).

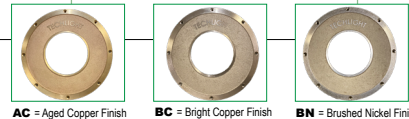
LISTINGS — ETL suitable for wet locations. IP68 ^{30m} rated to 2 meters. Meets US and Canadian safety standards. -40°C to 40°C ambient operation. RoHS Compliant.



EXAMPLE:

TDBX 20DO 4L CW 1 BZ SRL

For Pre-Shipment of the Rough In Housing use the Ordering Chart on pg2.



Proudly Lighting America's Landmarks.
Link to Installation Instructions

www.techlight.com

FS-TDBX PRE-SHIPPED RIH & DELAY-SHIPPED TDBX FINISHING SECTION

Pre-Shipped RIH & TDBX FS Ordering

This ordering method ensures your project stays on schedule and your fixtures are installed in optimal conditions, with all the features and reliability of the TDBX series.

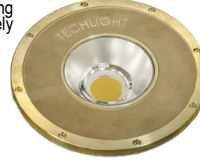
Order the **TDBX** In-Ground Light as two separate components for maximum installation flexibility. The Rough-In Housing (**RIH**) can be **pre-shipped to the job site for early installation**, while the TDBX Finishing Section (**FS**) is **delivered later for final assembly**.

This approach is ideal for projects with phased construction or where site conditions require the housing to be installed ahead of the lighting components.

PRE-SHIPPED ROUGH-IN HOUSING (RIH): Durable, corrosion-resistant composite housing designed for in-ground burial. Available with optional 1/2" side conduit entry. Shipped separately for early installation and site preparation.

TDBX FINISHING SECTION (FS): High-performance LED module with customizable optics, outputs, color temperatures, and trim finishes. Includes advanced heat dissipation, anti-siphon wiring, and IP68 quick connects for reliable, easy installation. Ordered to match the installed RIH for seamless final assembly.

TDBX-PK shown installed with RIH, but ordered separately.



What to Expect with Pre-Shipment Ordering:

1. Early delivery of the RIH for rough-in and site work.
2. Separate shipment of the FS for final fit-out.
3. Flexible scheduling and reduced risk of fixture damage during construction.
4. All the performance, durability, and customization options of the TDBX series.

ORDERING INFORMATION

Choose the bold face options for the appropriate luminaire configuration for your application and enter on the line above each fixture attribute. Accessories may be factory installed, depending on the particular accessory chosen, but still be ordered as a separate line item.

EXAMPLE:

Line1: **FS-TDBX 20DO 4L CW 1 BZ SRL**
 Line2: **TDBX-RIH SCE (126925SCE)**
 Line3: **TDBX-PK (126926)** if required**

Pre-Shipped Rough In Housing (RIH) & Separate TDBX Finishing Section (FS)

If there is **no need to pre-ship the RIH**, then use **the Ordering Chart on pg1**.



AC = Aged Copper Finish

BC = Bright Copper Finish

BN = Brushed Nickel Finish

LINE1 / FS (Delayed Shipment) **Required**

| FS-TDBX | NOMINAL DISTRIBUTION | NOMINAL OUTPUT | COLOR TEMP | VOLTAGE | TRIM FINISH | OPTIONS |
|--|--|---|------------------------------------|---|---|---------|
| 15DO = 15° Optic ¹ 20DO = 20° Optic ¹ 25DR = 25° Reflector ¹ 35DO = 35° Optic ¹ 40DR = 40° Reflector ¹ 45DO = 45° Optic ¹ 60DR = 60° Reflector ¹ 90DR = 90° Reflector ¹ | 25L = 2500 Lumens, 25W 4L = 4000 Lumens, 36W 45L = 4500 Lumens, 42W 5L = 5000 Lumens, 48W 6L = 6000 Lumens, 56W | CW = Cool White 5000K NW = Neutral White 4000K WW = Warm White 3000K | 1 = Multi-Volt ² | BLANK = Natural Brass Finish ³ BZ = Bronze Powder Coat Finish ⁴ BK = Black Powder Coat Finish ⁴ AC = Aged Copper Finish Plated BC = Bright Copper Finish Plated BN = Brushed Nickel Finish Plated | DLP = Dimming Leads Pulled SRL = Slip Resistant Lens | |

LINE2 / RIH (Pre-shipped) **Required**

| | |
|--------------------------|--------------------------------------|
| TDBX-RIH (126925) | |
| ROUGH IN HOUSING | OPTION |
| | SCE = 1/2" Side Conduit Entry |

TDBX-PK shown installed with RIH, but ordered separately.



IMPORTANT

****For Installations in Concrete or Pavers BOTH the TDBX-RIH (126925) & TDBX-PK (126926) must be ordered together as separate line items.****

LINE3 / ACCESSORIES (Pre-shipped) **Conditional****

(Order as separate line items)

TDBX-PK (126926) **
TDBX SCR TAMP RESIST

Concrete/Paver Pour Kit (Accessory – not a bundled kit)
Tamp Resistant Screw Kit



SHIPMENT TIMELINE:

- Line 1:** (Delayed Shipment: Finishing Section)
- Line 2:** (Pre-Shipped Rough-In Housing)
- Line 3:** (Pre-Shipped Accessories)

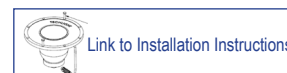
NOTES

- 1 = Distribution patterns are achieved using one of two internal optical systems, depending on the selected beam angle: a **refracting Optic** or a **Reflector** and does not require separate ordering. (See "Internal Optical Systems" on pg.1)
- 2 = Multi-Volt is an auto ranging power supply from 120V to 277V input.
- 3 = Additional cost for all Trim Finish Coats, outside of "Blank", natural brass finish. See Price Guide for additional pricing info.
- 4 = Bronze and Black finishes consist of a polyester powder coat applied to the exposed areas of the cast lens frame only. If no finish is specified ("Blank" option), the lens frame will be provided as natural brass finish.
- 5 = **To have rough-in-housing (RIH) pre-shipped**, please enter purchase order with at least two separate line items. (use ordering chart above)

Line1: will include the TDBX Fixture as the "Finishing Section"

Line2: will include your elected "Pre-Shipped" RIH option.

Line3: will include any of your "Pre-Shipped" accessories

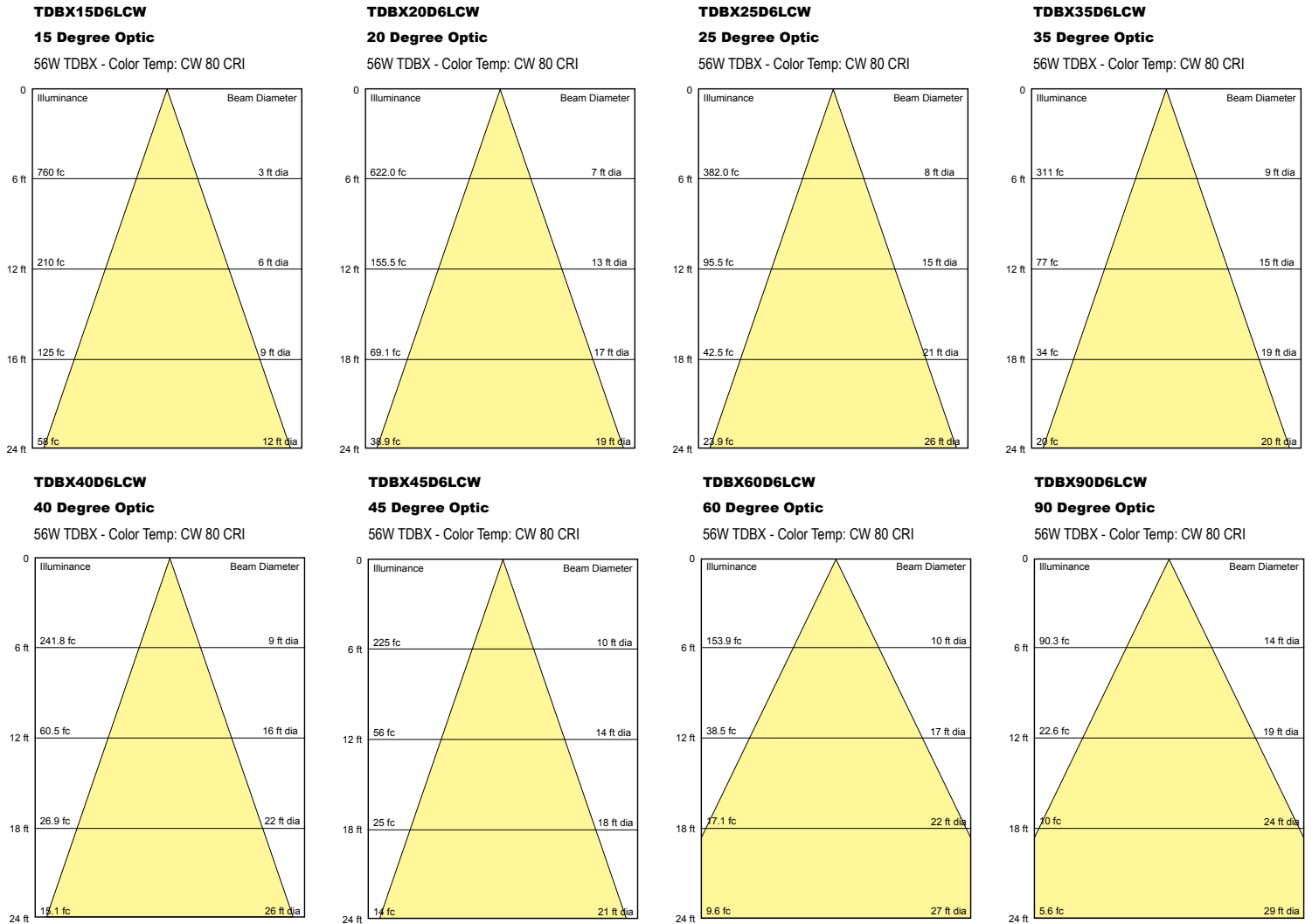


TDBX LED DIRECT BURIAL INGROUND LIGHT

DELIVERED LUMEN CHARTS

| TDBX (80CRI) | 25L (600mA, 25W) | | | 4L (900mA, 36W) | | | 45L (1050mA, 42W) | | | 5L (1200mA, 48W) | | | 6L (1400mA, 57W) | | |
|----------------------|------------------|------|------|-----------------|------|------|-------------------|------|------|------------------|------|------|------------------|------|------|
| | CW | NW | WW | CW | NW | WW | CW | NW | WW | CW | NW | WW | CW | NW | WW |
| 15DO = 15° Optic | 2340 | 2315 | 2199 | 3540 | 3500 | 3325 | 4081 | 4037 | 3835 | 4680 | 4629 | 4398 | 5441 | 5383 | 5113 |
| 20DO = 20° Optic | 2388 | 2362 | 2244 | 3609 | 3570 | 3391 | 4164 | 4119 | 3913 | 4775 | 4723 | 4487 | 5552 | 5492 | 5217 |
| 25DR = 25° Reflector | 2767 | 2737 | 2600 | 4182 | 4137 | 3930 | 4826 | 4773 | 4534 | 5533 | 5473 | 5199 | 6434 | 6364 | 6046 |
| 35DO = 35° Optic | 2319 | 2293 | 2179 | 3505 | 3466 | 3293 | 4044 | 4000 | 3800 | 4637 | 4586 | 4357 | 5392 | 5333 | 5066 |
| 40DR = 40° Reflector | 2796 | 2766 | 2627 | 4226 | 4180 | 3971 | 4876 | 4823 | 4582 | 5591 | 5531 | 5254 | 6502 | 6431 | 6109 |
| 45DO = 45° Optic | 2187 | 2164 | 2055 | 3306 | 3270 | 3107 | 3815 | 3773 | 3585 | 4374 | 4327 | 4110 | 5086 | 5031 | 4779 |
| 60DR = 60° Reflector | 2699 | 2670 | 2537 | 4080 | 4036 | 3834 | 4708 | 4657 | 4424 | 5398 | 5340 | 5073 | 6277 | 6209 | 5899 |
| 90DR = 90° Reflector | 2758 | 2728 | 2591 | 4168 | 4123 | 3917 | 4810 | 4757 | 4519 | 5515 | 5455 | 5182 | 6413 | 6343 | 6026 |

ILLUMINANCE CONE DIAGRAMS



FIXTURE DIMENSIONS

